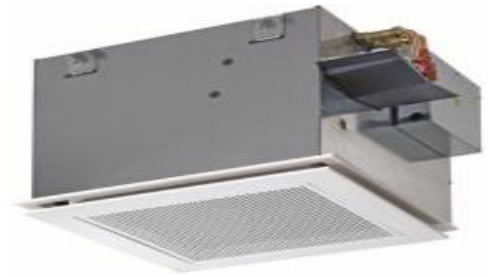


Eurorasterkassette ESTUCS/HM 621 VDI6022



Eurorasterkassette ESTUCS/HM 621 VDI6022

| | | |
|------------------------|---------|----------|
| Kühlleistung (7/12°C) | kW | 2,85 |
| Heizleistung (45/40°C) | kW | 2,99 |
| Gewicht Innengerät | kg | 24 |
| Spannungsversorgung | V/Ph/Hz | 230/1/50 |